

**No need to stop MACHINES**



**Centralised Automatic Lubrication Systems & Greasing SPM, Oiling SPM, for Auto Industries and Others..**

**A Source of Complete Oil & Grease Lubrication Solutions**



Managing Director



## COMPANY PROFILE (Since 2009)

**Lubsa Multilub Systems Pvt. Ltd.** is one of the extra ordinary manufacturers of Oil & grease Lubrication Systems & Hydraulic power pack & other assembly metric pump for enabling plant, special purpose machine for greasing, oiling application & Other P.V.C. liquid pump for bottle food packing cover in national & international markets. We are an **ISO 9001:2015 certified organization**. The most important fact about the firm is that they always wishes to do extraordinary compared to other firms. This fact mostly keeps them ahead of their competitors by a huge margin. Apart from the quality products manufacturing firm also keeps their rates very reasonable so that nobody has to choose between quality & prices. We are believed on the product quality and client satisfaction. The honorable Managing Director Mr. **A. K.Yadav** is very dynamic and dedicated persons with high level of determination.

Leveraging on our manufacturing facility, we are able to fabricate a wide range of centralized lubrication system for meeting the requirements of oil and grease in diverse industries.

Furthermore, we also have with us an experienced team who assist us in designing and developing our range as per the specific requirements of the customers. With the help of our expert team, we are providing erection and commissioning services to our customers. The best value is also enhanced by **Lubsa** wide customer service network guaranteed fast delivery, rapid response, local back-up, as well as by wide service network supporting the after sales service.

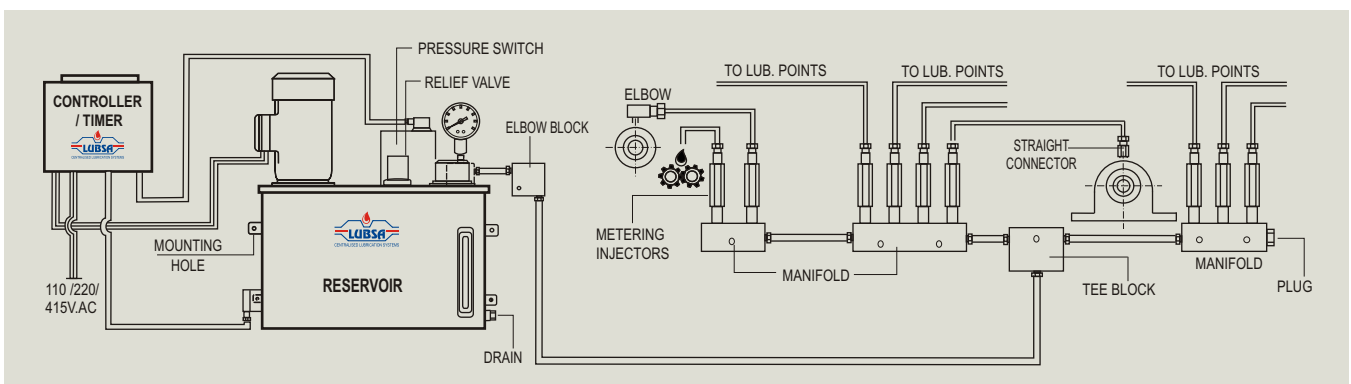
- PROLONGED LIFE OF MACHINE.
- MORE PRODUCTION.
- MORE RELIABILITY.
- NO HUMAN ERROR.
- OPTIMUM LUBRICANT TO EACH POINT.
- LESS CONSUMPTION OF LUBRICANT.
- LOW NOISE LEVEL.
- LESS POWER CONSUMPTION.
- LESS WEAR & TEAR.
- SAFE NO NEED TO STOP MACHINE.

## DESIGN FACILITY - SOLID WORK SOFTWARE

**Centralised lubrication system can be adopted on any machine particularly:-**

- ◆ Machine Tools
- ◆ Textile machines
- ◆ Packaging equipment
- ◆ Presses and Hammers
- ◆ Pulp & paper processing machines
- ◆ Food Processing equipment
- ◆ Wood working machine
- ◆ Knitting machine
- ◆ Pharmaceutical machines
- ◆ Stone processing machines
- ◆ Printing machine
- ◆ Forzing plants
- ◆ SPM machine
- ◆ Injection/Blow moulding machine
- ◆ Pouch malcium/filling machine
- ◆ Bottle forming /filling washing machine
- ◆ Sheet metal working machine
- ◆ Shearing and press brakes
- ◆ Die casting machine
- ◆ Rubber making machine
- ◆ Metal forms machine
- ◆ Calendering machine
- ◆ Cement plants
- ◆ Sugar plants
- ◆ Rolling mill machine
- ◆ Wire drowing machine

## INSTALLATION LAYOUT



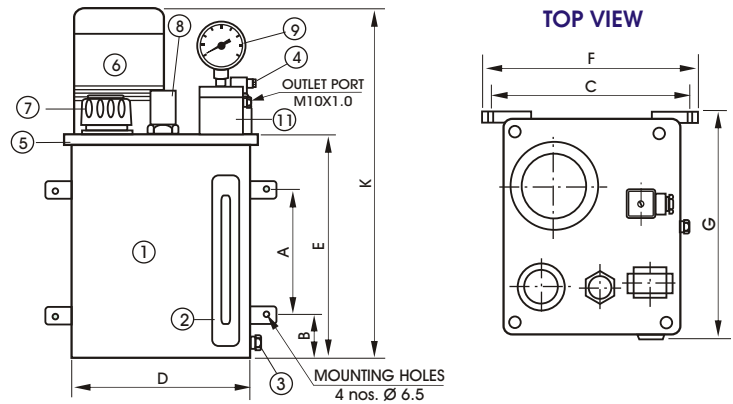
Vendor registration, email : [akyadav@lubsa.co.in](mailto:akyadav@lubsa.co.in)

## AUTOMATIC LUBRICATION SYSTEMS

Motorised lubrication units are electric motor driven pumps along with reservoir, oil filler, suction stainer, pressure relief valve, bleed valve etc. And are suitable for single shot automatic oil lubrication. These motorised lubrication units are to be run intermittently, During motor 'ON' period (normally 5 sec) all metering cartridges eject out required amount of oil at various points of the machine. And during motor 'OFF' period (decided by lubrication frequency min. 1 minute) these metering cartridges get recharged for next lubrication cycle. These units do not require any return line connection as metered amount of oil is lost in normal running of the machine.



### MODEL LMLS-03, LMLU-03

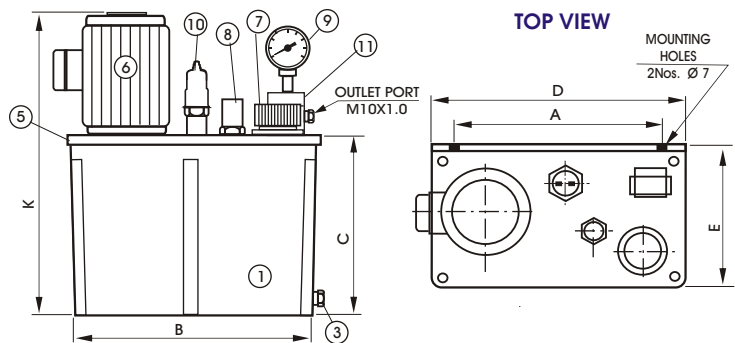


Dimensions in mm.

MODEL	Reservoir Cap.	A	B	C	D	E	F	G	K
LMLS - 03	3 Litres	100	40	170	150	190	195	180	320
LMLU - 03	3 Litres	100	40	170	150	190	195	190	325



### MODEL LMCLS-2900(LX), LMCLU-2900(LX)

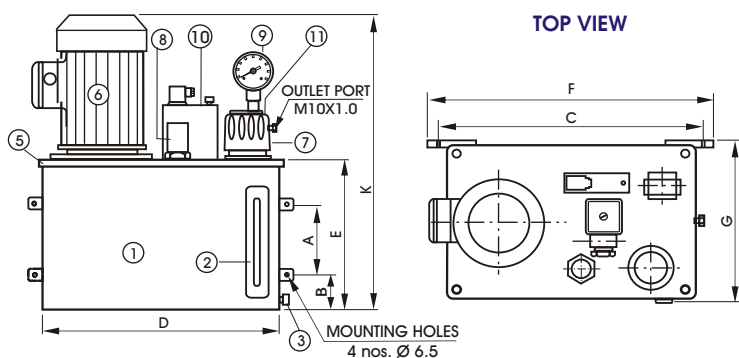


Dimensions in mm.

MODEL	Reservoir Cap.	A	B	C	D	E	K
LMCLS-2900 (LX)	2.9 Litres	195	200	155	215	145	285
LMCLU-2900 (LX)	2.9 Litres	195	200	155	215	145	290



### MODEL LMLU-05, LMLU-08



Dimensions in mm.

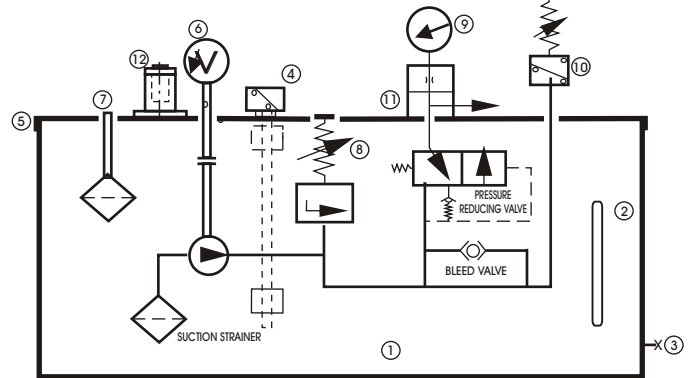
MODEL	Reservoir Cap.	A	B	C	D	E	F	G	K
LMLU - 05	5 Litres	100	40	310	285	185	310	170	375
LMLU - 08	8 Litres	100	50	330	300	200	355	200	385

## AUTOMATIC LUBRICATION SYSTEMS

### MODEL LMLU-20 / 30 / 50 / 100



### SCHEMATIC CIRCUIT



### Parts Name

- |                  |                    |                           |                       |
|------------------|--------------------|---------------------------|-----------------------|
| 1 Reservoir      | 2 Oil Level Gauge  | 3 Drain Plug              | 4 Float Switch        |
| 5 Top Plate      | 6 Motor            | 7 Oil Filler Cum Breather | 8 Relief Valve        |
| 9 Pressure Gauge | 10 Pressure Switch | 11 Junction Block         | 12 Return Line Filter |

### Technical Specifications :-

MODEL	Reservoir	Discharge	Motor Rpm 1500 (syn)	Pressure Setting	Pressure Switch	Float Switch
LMLS - 03	3 Ltrs.	1.0 LPM	0.10 Kw, 230V AC. Single Phase	15 kg/Cm <sup>2</sup>	-	-
LMLU - 03	3 Ltrs.	1.0 LPM	0.09 Kw, 415V AC. 4Pole, 3 Phase	15 kg/Cm <sup>2</sup>	(Optional) 1NO+1NC or NO or NC Contacts, (For line oil pressure indication)	(Optional) Top ON, Bottom ON NO or NC or 1NO+1NC contacts (For oil low / high level indication)
LMCLS-2900 (LX)	2.9 Ltrs.	1.0 LPM	0.10 Kw, 230V AC. Single Phase	12 kg/Cm <sup>2</sup>		
LMCLU-2900 (LX)	2.9 Ltrs.	1.0 LPM	0.09 Kw, 415V AC. 4Pole, 3 Phase	15 kg/Cm <sup>2</sup>		
LMLU - 05	5 Ltrs.	1.0 LPM	0.18 Kw, 415V AC. 4Pole, 3 Phase	20 kg/Cm <sup>2</sup>		
LMLU - 08	8 Ltrs.	2.5 LPM	0.18 Kw, 415V AC. 4Pole, 3 Phase	25 kg/Cm <sup>2</sup>		
LMLU - 20	20 Ltrs.	2.5 LPM	0.18 Kw, 415V AC. 4Pole, 3 Phase.	25 kg/Cm <sup>2</sup>		
LMLU - 30	30 Ltrs.	2.5 LPM	0.37 Kw, 415V AC. 4Pole, 3 Phase.	25 kg/Cm <sup>2</sup>		

**NOTE :** \* All above unit suitable for oil viscosity range 50-500 cst. \* Lubrication unit Reservoir (Ltrs.) & Discharge (LPM) Available as per customer requirement.

## ELECTRONIC TIMER

The Electronic Timer are used for time controlling of lubrication systems. There are different models used for different applications. Following models are under our regular production.



### Technical Specification

MODEL	MOUNTING	DESCRIPTION
LM ET-501	Wall	ON time-5 sec. (Fixed) & OFF time 2-128 min (Adjustable)
LM ET-502	Panel	ON time-5 sec. (Fixed) & OFF time 1-240 min (Adjustable)
LM ET-503 Cyclic	Panel	ON / OFF time -0 Mili sec. To 100 Hours (Adjustable)
LM ET-504 ON / OFF Delay	Panel	ON / OFF Delay time-0 Mili sec. To 100 Hours (Adj.)

## ELECTRONIC CONTROLLERS

These are used in the lubrication systems where pressure switch/ float switch are provided for sensing the pressure and low oil level. In the controllers indicator for Pressure & Low oil level sensing are provided. ON time is 5 sec. Fixed and OFF Time is 2 to 240 min. Adjustable.



### Technical Specification

MODEL	DESCRIPTION
LM EC -1001 X W (Wall mounting)	ON time-5 sec (Fixed) OFF time 2, 4, 8, 15, 30, 60, 120, 240 min. (Adj.) with lubrication fault- oil low level indication.
LM EC -1002 X W (Panel mounting)	ON time-5 sec (Fixed) OFF time 2, 4, 8, 15, 30, 60, 120, 240 min. (Adj.) with lubrication fault- oil low level indication (built in contactor)





AN ISO 9001-2015 CO.



Registered With  
**NSIC**  
CERTIFIED CO.



CENTRALISED LUBRICATION SYSTEMS

**A SOURCE OF COMPLETE OIL /GREASE EQUIPMENTS RESEARCH & DEVELOPMENT CENTRE**

## **LUBSA MULTILUB SYSTEMS (P) LIMITED**

(An ISO 9001:2015 Certified Company)

**Head Office :** (All corresponding address)

Plot No. 1870, DC, Dabua Gajipur Road, (Near Bhardwaj Medical Store)  
N. I. T. FARIDABAD-121001 (HR) INDIA Mob. : 9212566247 (akyadav@lubsa.co.in)  
9717190247 (info@lubsa.co.in), 9871496247 (sales@lubsa.co.in) (Sunday- Closed)

**Manufacturing plant**

Plot No. 1- 6 & 67-71 Village Bajri, Near Pali Chowk, Front of petrol pump,  
Ballabgarh Sohna Road, N.I.T. FARIDABAD-121001 ( Haryana) INDIA  
Mob. : 9899451247, 9871496247 E-mail : lubsa1981@gmail.com  
Website : www.lubsa.co.in, lubsalubsystems.com (Sunday- Closed)



Google Maps

*Note : Specifications are subject to be changed without any notice.*

**CUSTOMERS' CARE No. 9899451247**